

# SERIE XP

# 3.1.2.3.

## Pompa ad Ingranaggi Gear Pump

CODICE DI ORDINAZIONE / DECODING

3.1.2.3 . XXX . X . 0 . X . 0

**UNI**  
21-222

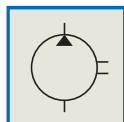
XP 15  
XP 22  
XP 36  
XP 43  
XP 57  
XP 65  
XP 75  
XP 83  
XP 102

ALLESTIMENTI SPECIALI/SPECIAL OPTIONS  
0 = NON RICHIESTO/STANDARD OPTION  
7 = ASPIRAZIONE LATERALE - MANDATA IN TESTA  
SIDE INLET - REAR OUTLET

ROTAZIONE/ROTATION  
1 = SINISTRO/ANTICLOCKWISE  
2 = DESTRO/CLOCKWISE

CILINDRATA/DISPLACEMENT

CODICE BASE/BASIC CODE

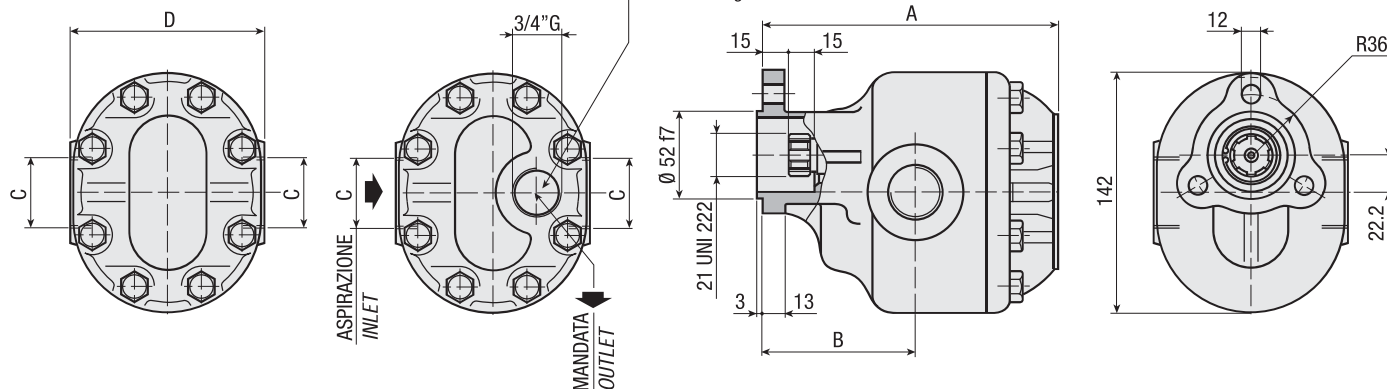


### CARATTERISTICHE E DATI TECNICI / SPECIFICATIONS AND TECHNICAL DATA

TIPO TYPE	CODICE CODE	CILINDRATA DISPLACEMENT cm <sup>3</sup> /rev.	A mm	B mm	C	D mm	PESO WEIGHT kg
XP 15	3.1.2.3.015.X.0.X.0	15	139	76	3/4" G	116	6.7
XP 22	3.1.2.3.022.X.0.X.0	22	144	76	3/4" G	116	7.2
XP 36	3.1.2.3.036.X.0.X.0	36	154	76	3/4" G	116	8.1
XP 43	3.1.2.3.043.X.0.X.0	43	159	90.5	1" G	116	8.6
XP 57	3.1.2.3.057.X.0.X.0	57	169	90.5	1" G	116	9.5
XP 65	3.1.2.3.065.X.0.X.0	65	174	90.5	1" G	116	9.9
XP 75	3.1.2.3.075.X.0.X.0	75	182	90.5	1" G	116	10.6
XP 83	3.1.2.3.083.X.0.X.0	83	189	90.5	1" G	116	11.2
XP 102	3.1.2.3.102.X.0.X.0	102	201	99.5	1" 1/4 G	120	12.2

Corredato di: Tappo cod. 0.12.01.108.000 + Rondella cod. 0.04.01.157.000

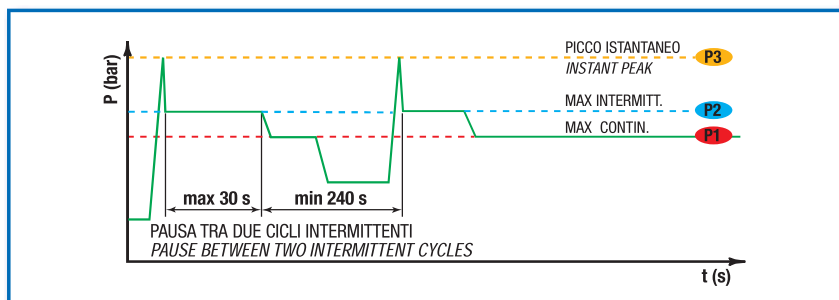
Included: Plug code 0.12.01.108.000 + Washer code 0.04.01.157.000



- A richiesta possono essere fornite le pompe ad ingranaggi con le guarnizioni HNBR per climi freddi (-40 °C).
- On request our gear pumps may be supplied with HNBR seals for cold climates (-40 °C).

**DATI TECNICI / TECHNICAL DATA**

**ESEMPIO CICLI LAVORO / EXAMPLE OF WORKING CYCLES**



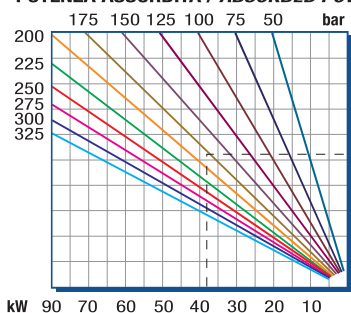
<b>Pressione d'aspirazione:</b> <i>Inlet pressure:</i>	0.7 ÷ 1.5 bar (assoluti/absolute)
<b>Campo viscosità lavoro:</b> <i>Operating viscosity range:</i>	12 ÷ 100 cSt
<b>Temperatura fluido °C (t):</b> <i>Fluid temperature °C (t):</i>	-10° + 80° C

Pressione Lavoro <i>Working Press.</i>	P2	Contaminazione / <i>Contamination</i>		Filtro / <i>Filter</i> βx = 75
		NAS 1638	ISO 4406	
≤ 200 bar		12	21/18	40 μm
≥ 200 bar		11	20/17	25 μm

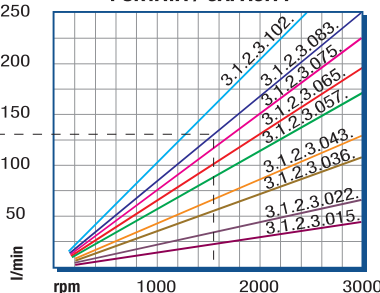
◀ **FILTRAZIONE CONSIGLIATA (ritorno o mandata)**  
*RECOMMENDED FILTERING (return or outlet)*

TIPO / <i>TYPE</i>			XP 15	XP 22	XP 36	XP 43	XP 57	XP 65	XP 75	XP 83	XP 102
Cilindrata <i>Displacement</i>	Vg	cm <sup>3</sup> /n cm <sup>3</sup> /rev.	15	22	36	43	57	65	75	83	102
Pressione massima continua <i>Max continuous operating pressure</i>		P1	315	305	300	280	260	240	220	210	180
Pressione massima intermittente <i>Max intermitt. operating pressure</i>	(max 30 s)	P2	340	330	325	305	285	265	240	230	200
Pressione massima di picco <i>Max peak pressure</i>	(≤ 0.1 s)	P3	450	450	450	400	380	330	320	300	250
Velocità massima intermittente <i>Max intermittent speed</i>	(P ≤ 20 bar)	n3	3000	3000	3000	3000	3000	3000	3000	3000	2500
Velocità massima continua <i>Max continuous speed</i>	(≤ P1)	n1	2500	2500	2500	2500	2500	2500	2500	2500	2000
Velocità minima intermittente <i>Min intermittent speed</i>	(≤ P2 x 0.5) (max 30 s)	n4	450	450	350	350	300	300	300	300	300

**POTENZA ASSORBITA / ABSORBED POWER**



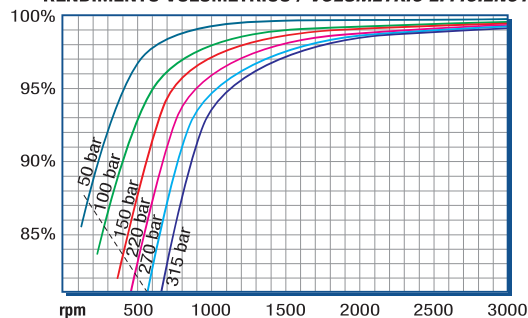
**PORTATA / CAPACITY**



RILIEVI ESEGUITI CON OLIO  
ISO VG 46 A 50° C (ν=30 cSt)  
THE ABOVE SPECIFICATIONS  
REFER TO OIL TYPE ISO  
VG 46 AT 50° C (ν=30 cSt)

**DIAGRAMMI / DIAGRAMS**

**RENDIMENTO VOLUMETRICO / VOLUMETRIC EFFICIENCY**



**COPPIA ASSORBITA / INPUT TORQUE**

